

VIA Metropolitan Transit **Art in Transit**

Prímo on Zarzamora St. and Military Dr. **Instructional Workshop Information**

Revised 1/31/18

Positive / Negative Space



When first approaching a design,
consider whether the material will be
POSITIVE or **NEGATIVE** space

Positive / Negative Space



Designing the **POSITIVE SPACE** means you cut out and remove the background and details

Positive / Negative Space



Designing the **NEGATIVE SPACE** means your figures are removed from the material

BRIDGES



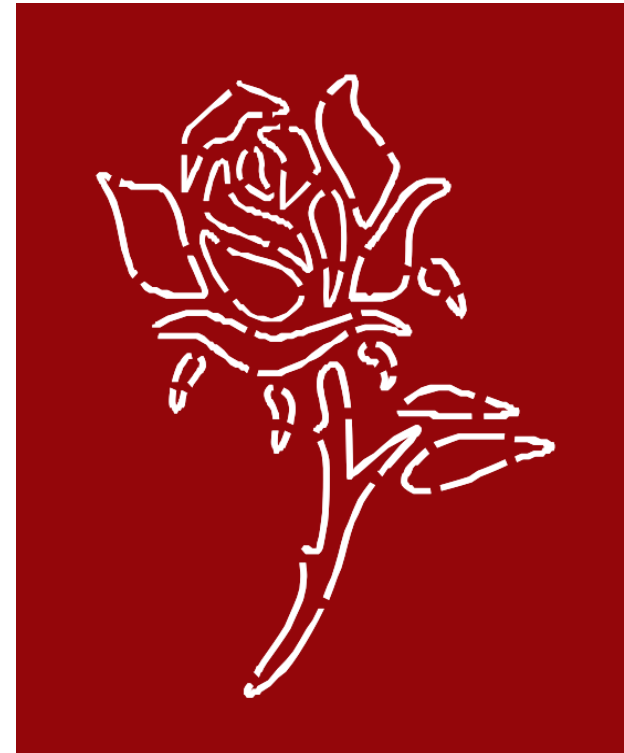
**How to connect the material
that outlines your design**

Think about how you want to outline a shape, and how the remaining metal will bridge together

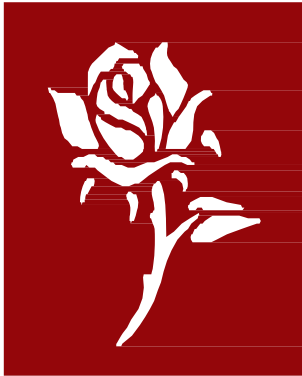


Cut an object out of positive space

OR

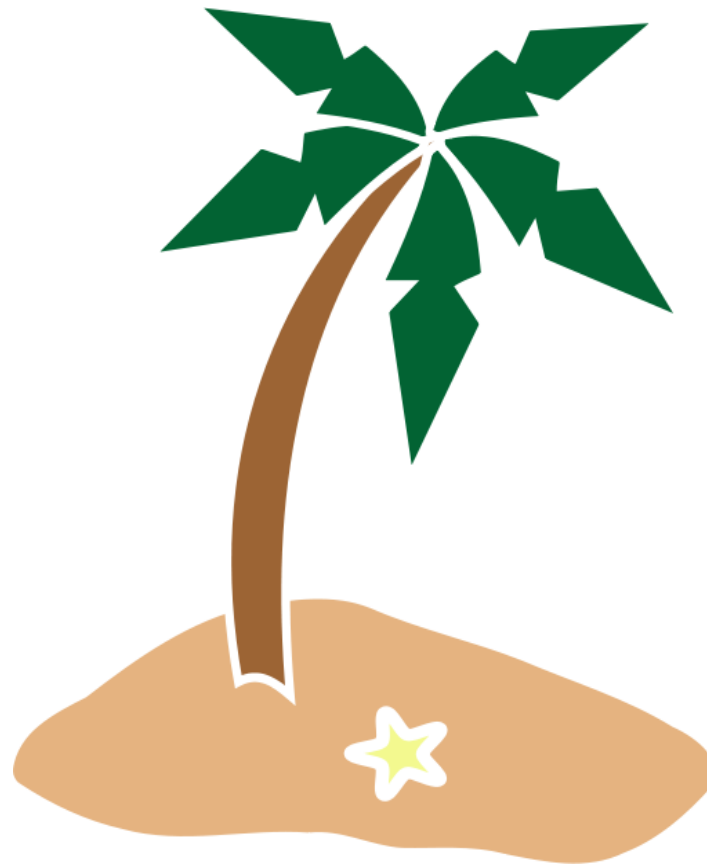


Cut an outline that leaves a more solid pattern, but still displays the form

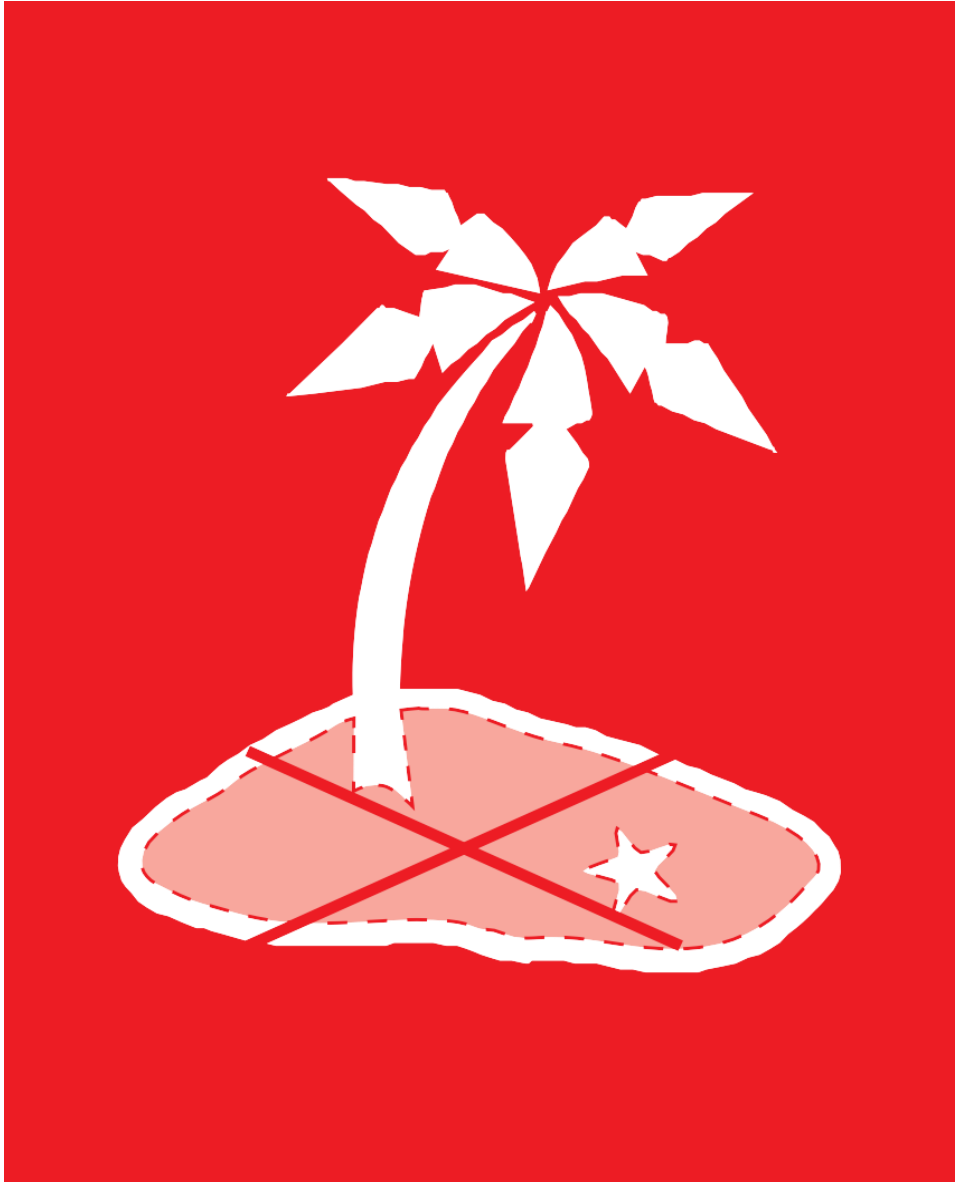


**Combining the two
bridge types can further
help define different
elements within a figure**

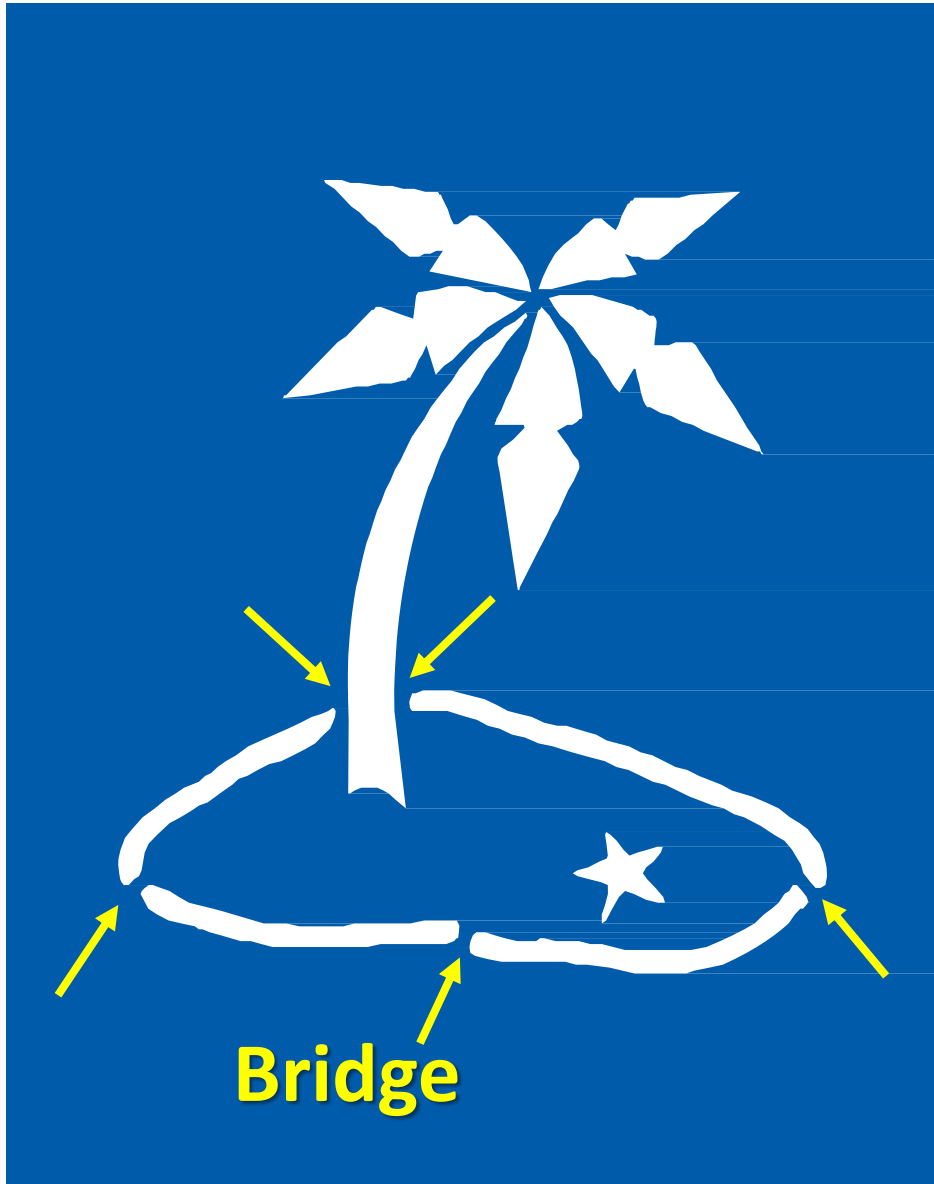
ISLANDS



How isolated shapes fall away



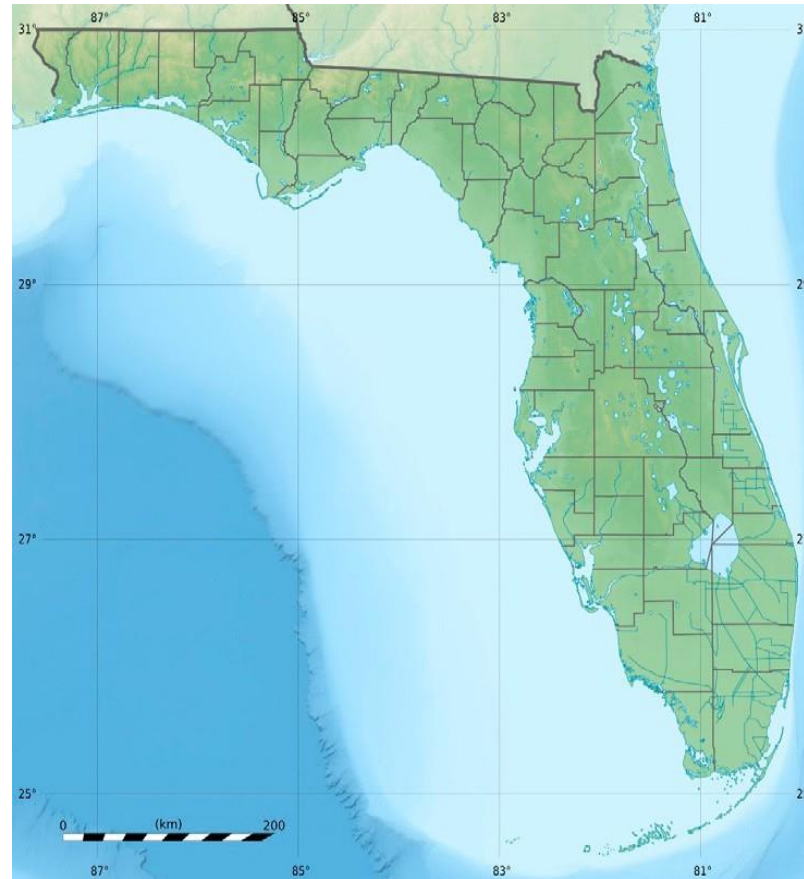
When a solid form is surrounded by negative space, it will drop out of the cut



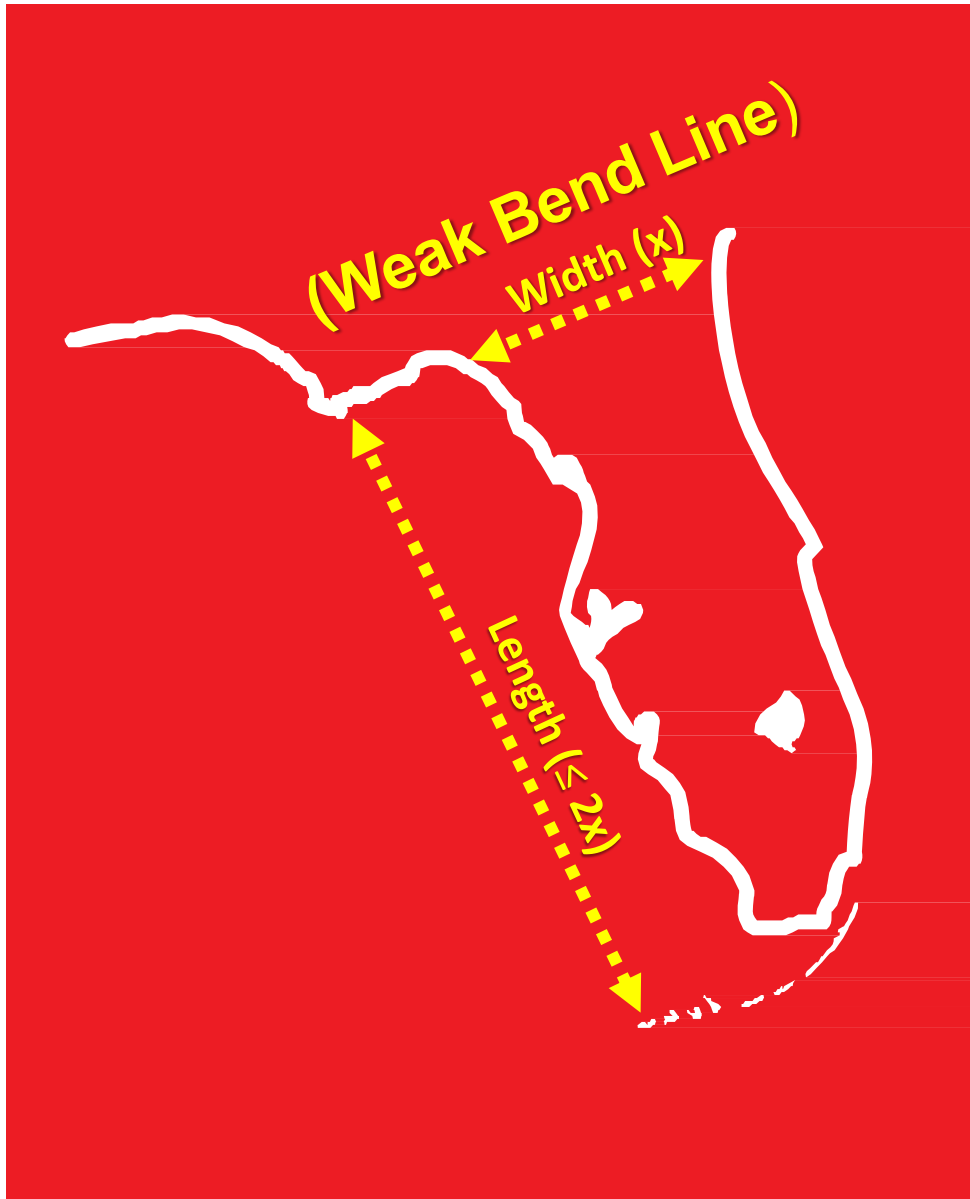
Adding bridges at key points allow solid forms to “float”

Recommendation:
Use a three (3) bridge minimum

PENINSULAS

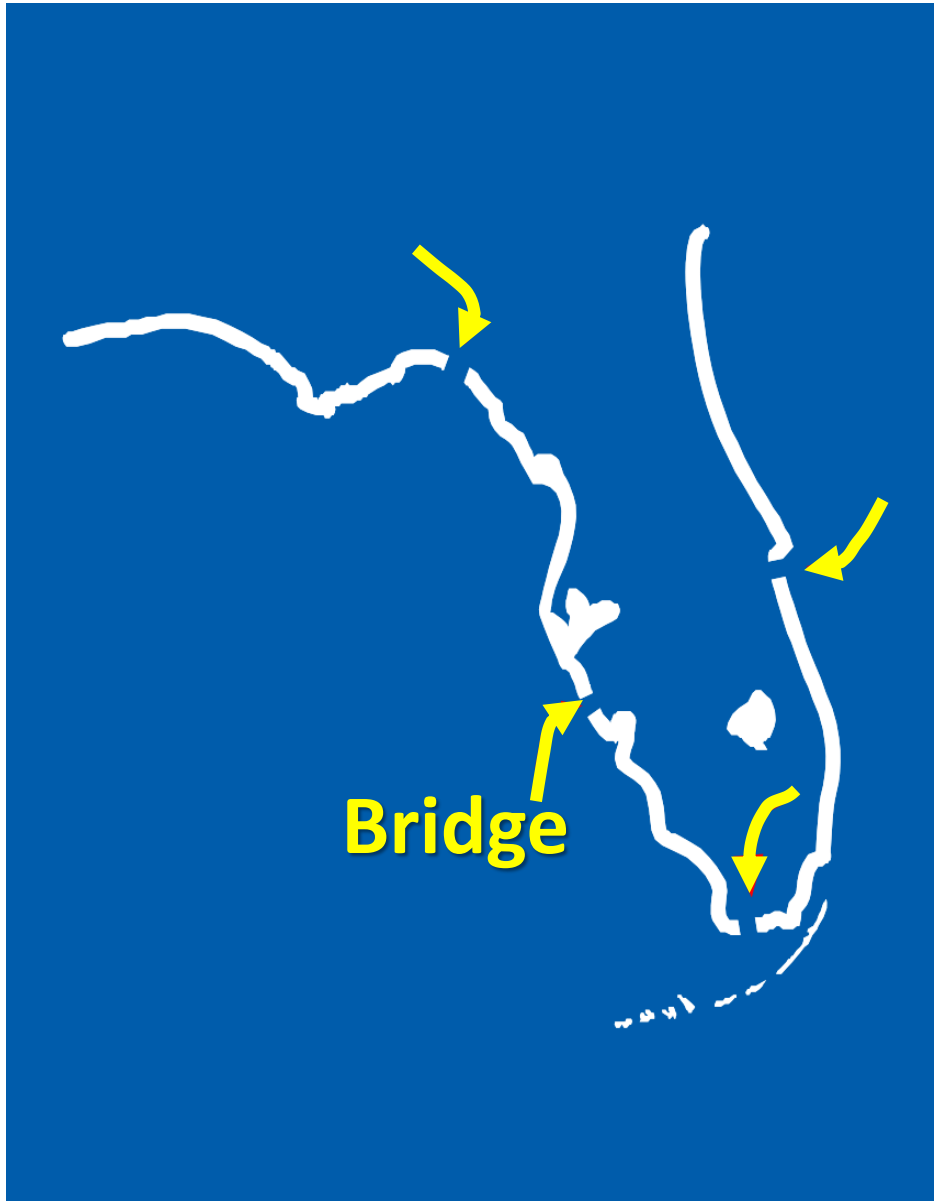


**Long, narrow forms can
weaken the metal**



Long, narrow forms are flimsy and easily bent

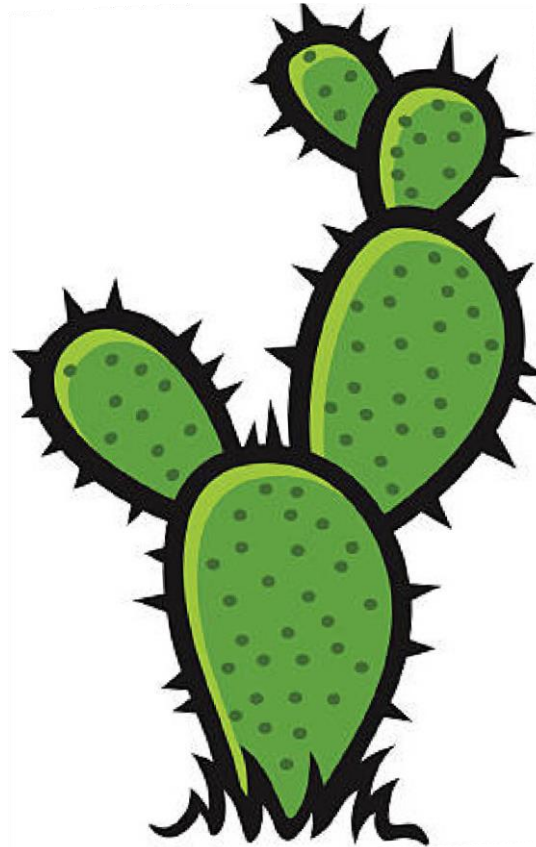
Recommendation:
The length of a peninsula should not be more than double the width, without support!



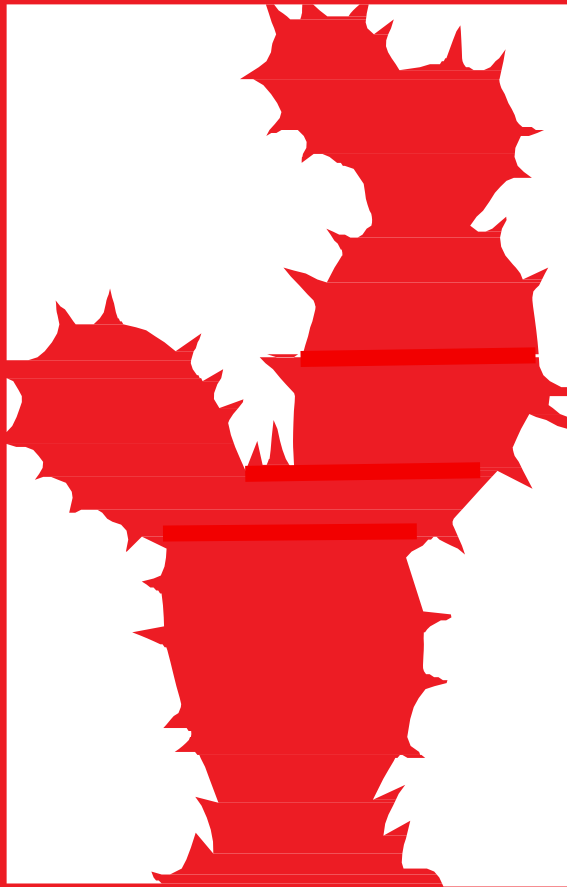
Bridges keep everything firmly in place

Recommendation:
It is best to place at least one 'bridge' at the end of a peninsula

SHARP POINTS



**Safety concerns, for
fingers and clothing**



When cut out of metal, a sharp point can:

- hurt anyone that might lean against it or**
- catch the clothing of a patron or passerby**



**Sharp, exposed points
should be smoothed out**

HEAD ENTRAPMENT



**Even if a head fits in, it won't
always be able to come out!**

Head Entrapment



Large openings are safety hazards for kids

Recommendation:
Use a 4" diameter as the maximum size of a hole opening

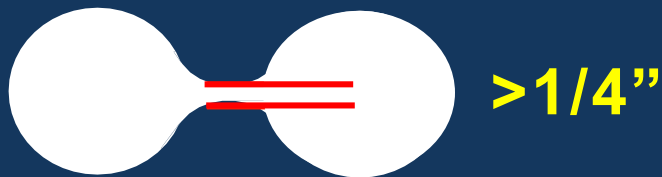
Head Entrapment



To achieve a smaller hole opening, either:

- shrink the forms**
- or**
- add detail that can shrink the openings**

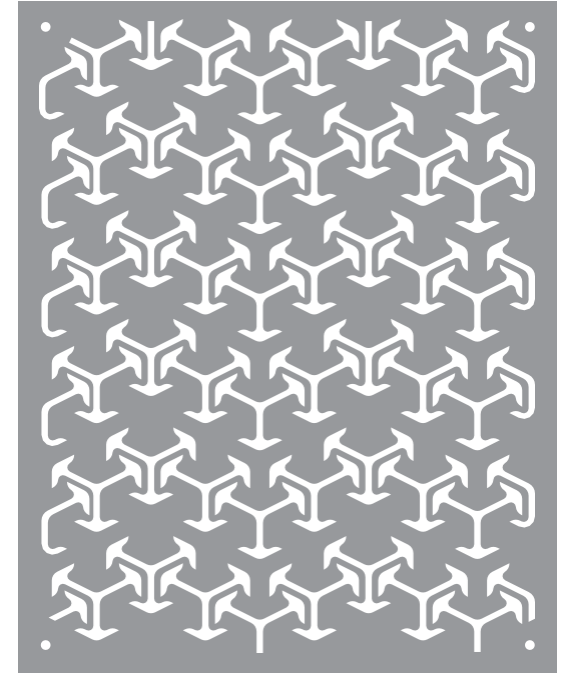
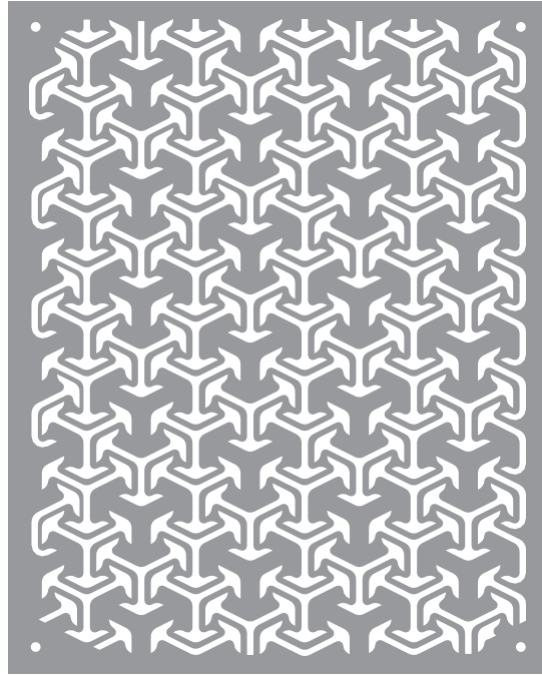
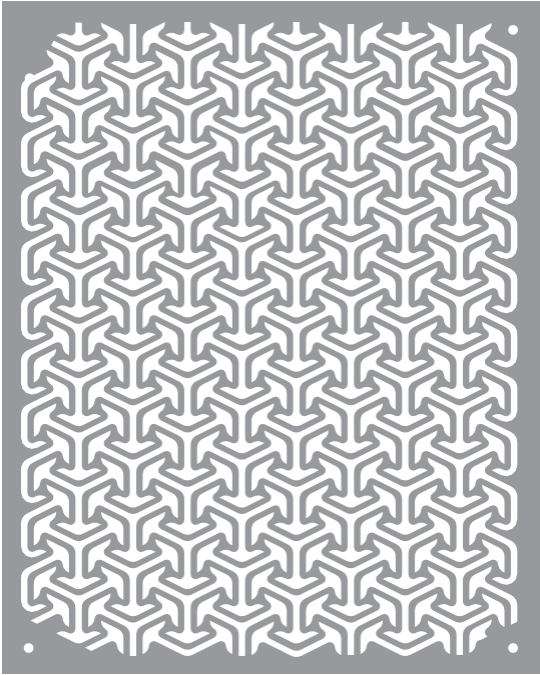
Minimum Hole Size/Cut Path



A metal material can be become distorted, based on its thickness and heat level.

Recommendation:
Use a 1/4" diameter as the minimum size for holes and openings.

Density / Intricacy

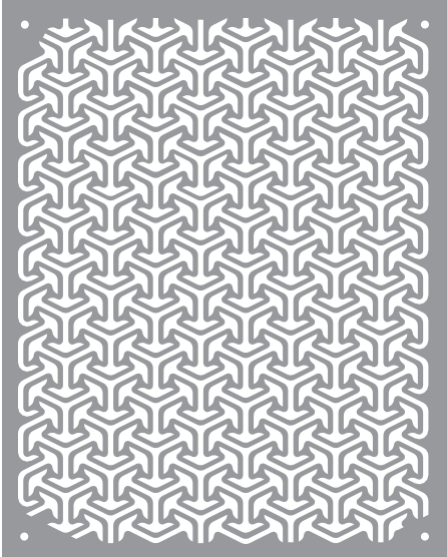


**Design with cutting time in mind.
Less intricate/dense designs will cut
faster and distort the material less.**

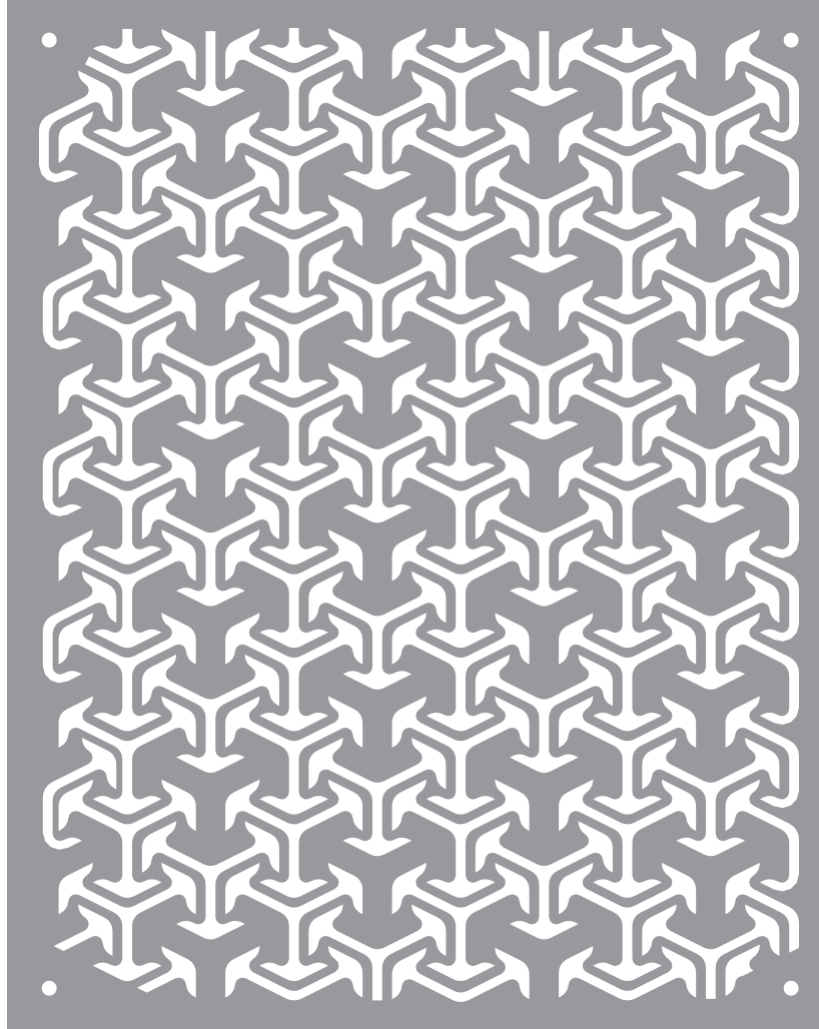
Recommendation:
**Design to an approximate maximum
of 3000 linear inches* of cut line.**

** This information is to assist the
applicant in a general approach.
An applicant is NOT required to
provide the number of linear inches
of cut line in the submittal.*

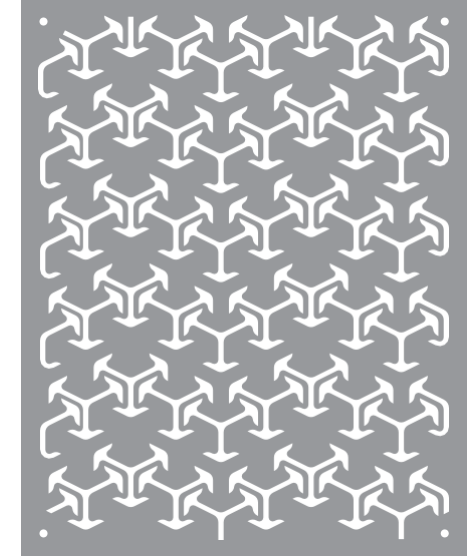
Density / Intricacy



4,000 linear inches



This is what 3,000 linear inches looks like!



2,000 linear inches

Text Doesn't
Have
To Be
STENCIL
FONT

Any font can be used for text, as long as it follows the rules of 'islands' and 'peninsulas.'

Be sure to
ADD BRIDGES!



By adding solid bars to text, it can easily become a positive space design

Text Examples



Connect strings of text with upper and lower bars

Connect multiple lines of text together and bound them within another shape

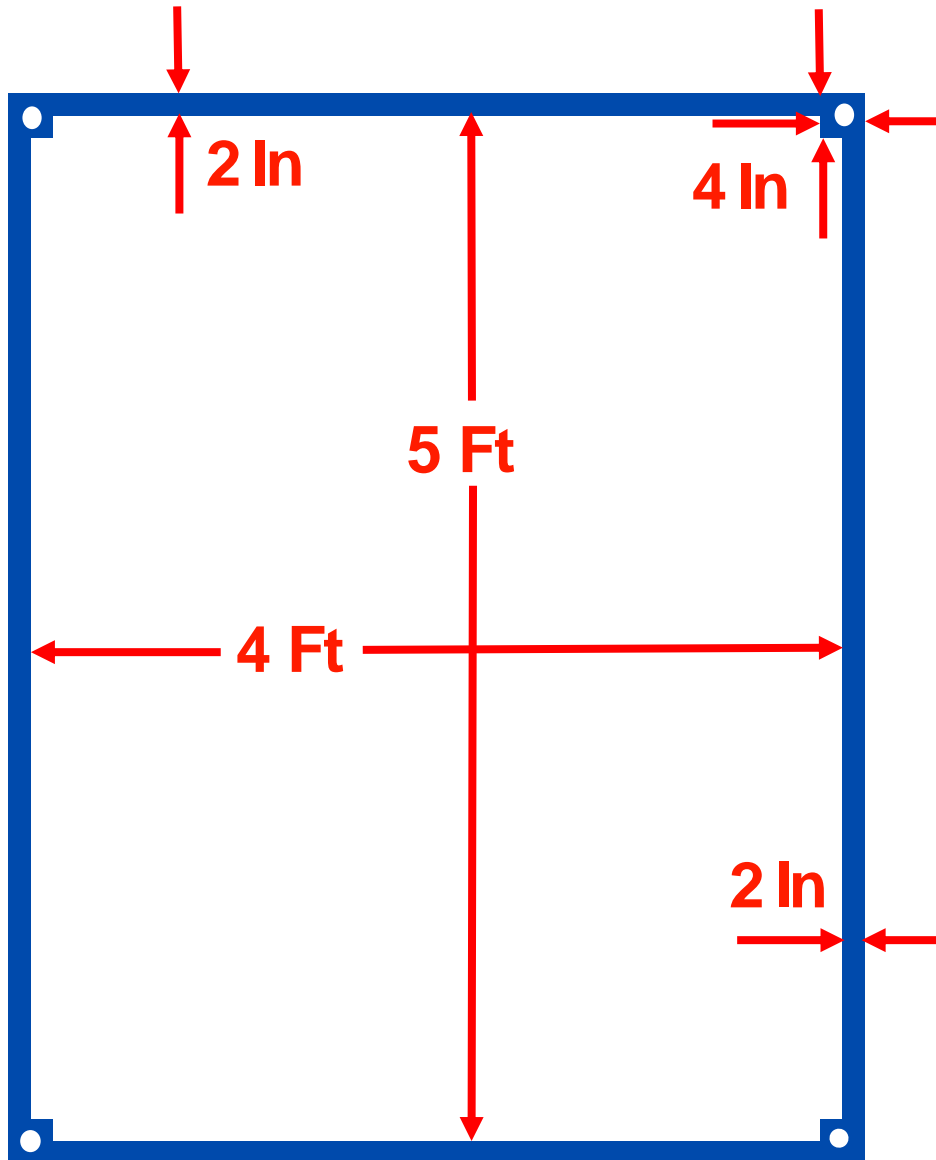
Stencil negative text cutouts so that letter counters hold in place

Stencil counters of curly text

Create stylized text allowing letter counters to drop out

Use stenciled fonts to create your text

Proportions (4' x 5')



All Panels are 4'W x 5'H

To design to the correct proportions, work within an 8"x10" box in an 8.5"x11" format (or sheet of paper). A panel format sheet is provided online: *"Art Contest Panel format (PDF)"*

Leave an approximate 2" of solid material 'frame' around the edge of each panel, and an approximate 4"x4" area of solid material at each corner.

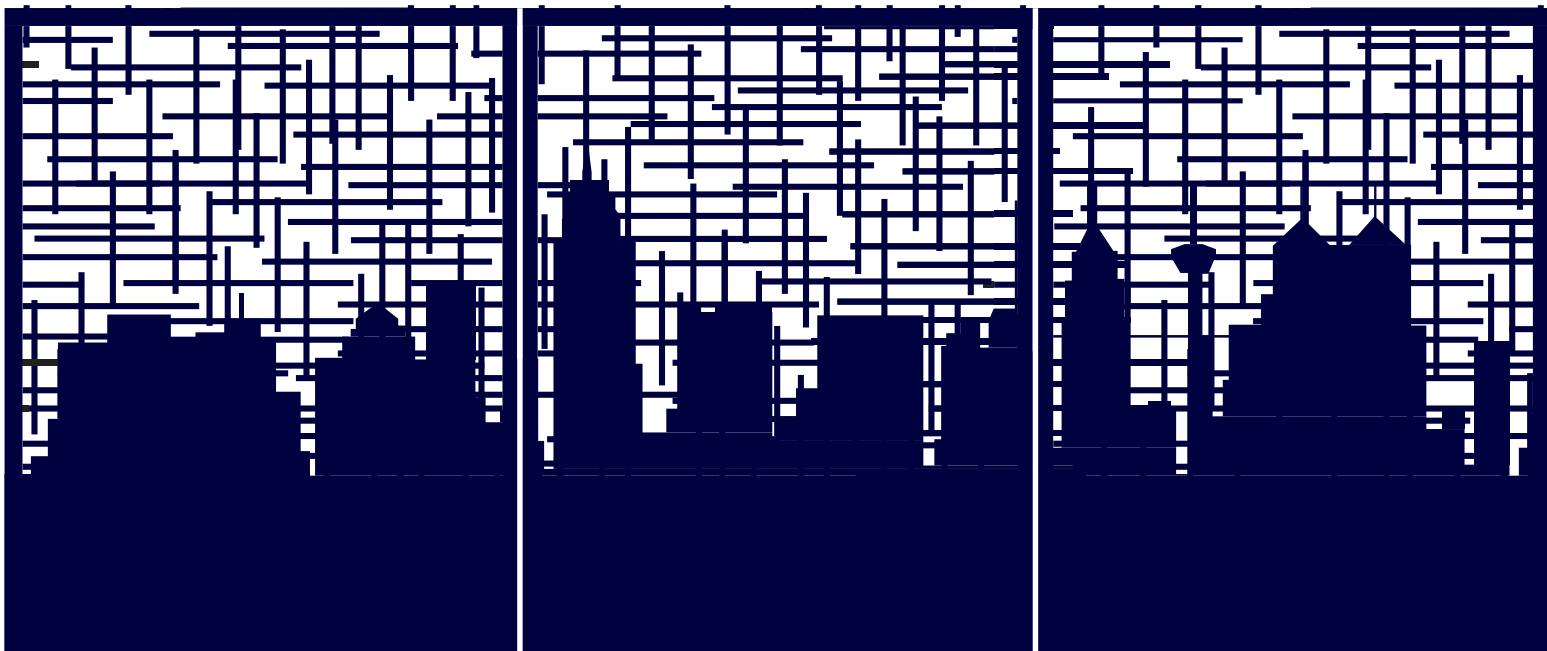
Remember:

Each panel in the series of panels will be included as a separate 'sheet' in a single submittal.

Connecting across Panels

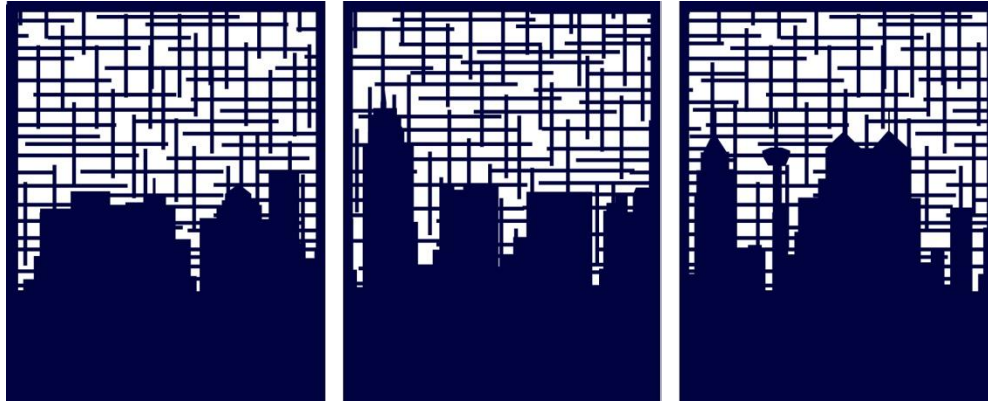


If your design connects horizontally across panels



Think about where the panels ‘break’ the image

Submission Examples



3-Panel Submission

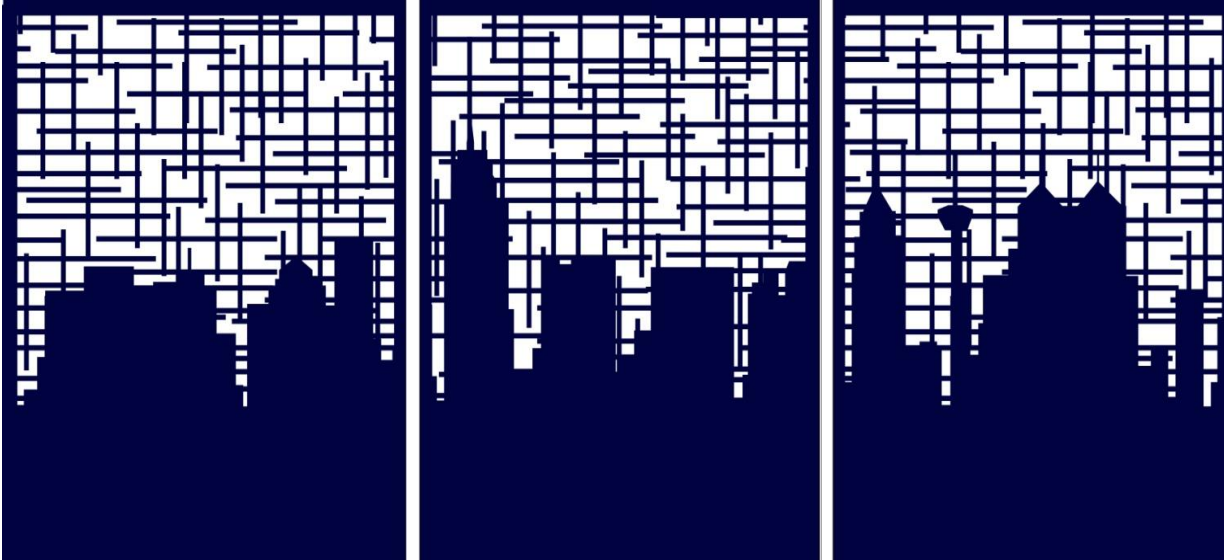


4-Panel Submission



8-Panel Submission

Submission Example: 3-Panel Shelter



**If your 3-panel entry
is submitted for
these shelters:**

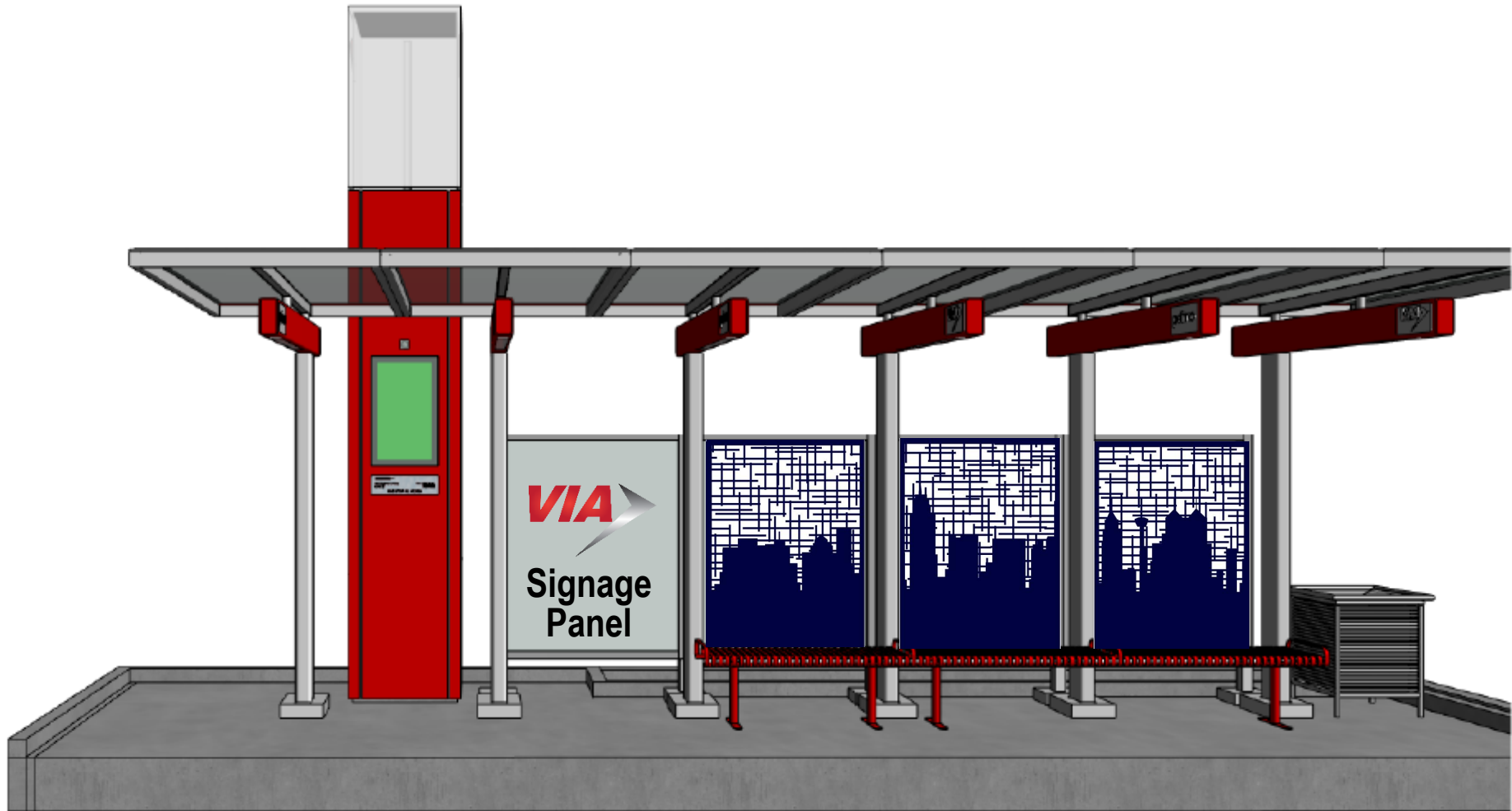
MILITARY DR

**EB Whitewood St
EB Barlite Blvd
WB Commercial Ave
WB/EB Pleasanton Rd
WB S Flores St
WB/EB Roosevelt Ave
WB/EB UIW/Kennedy Hill Dr**

ZARZAMORA ST

**SB/NB SAS Dr
SB/NB Southcross
SBNB Nogalitos St
SB/NB Culberson Ave
SB/NB Malone Ave
SB/NB Frio City Rd
SB/NB Ceralvo St
SB/NB Laredo St
SB/NB Guadalupe St
SB Buena Vista St
NB Commerce St
SB/NB Ruiz St**

Submission Example: 3 Panel Shelter



This is what it would look like installed!

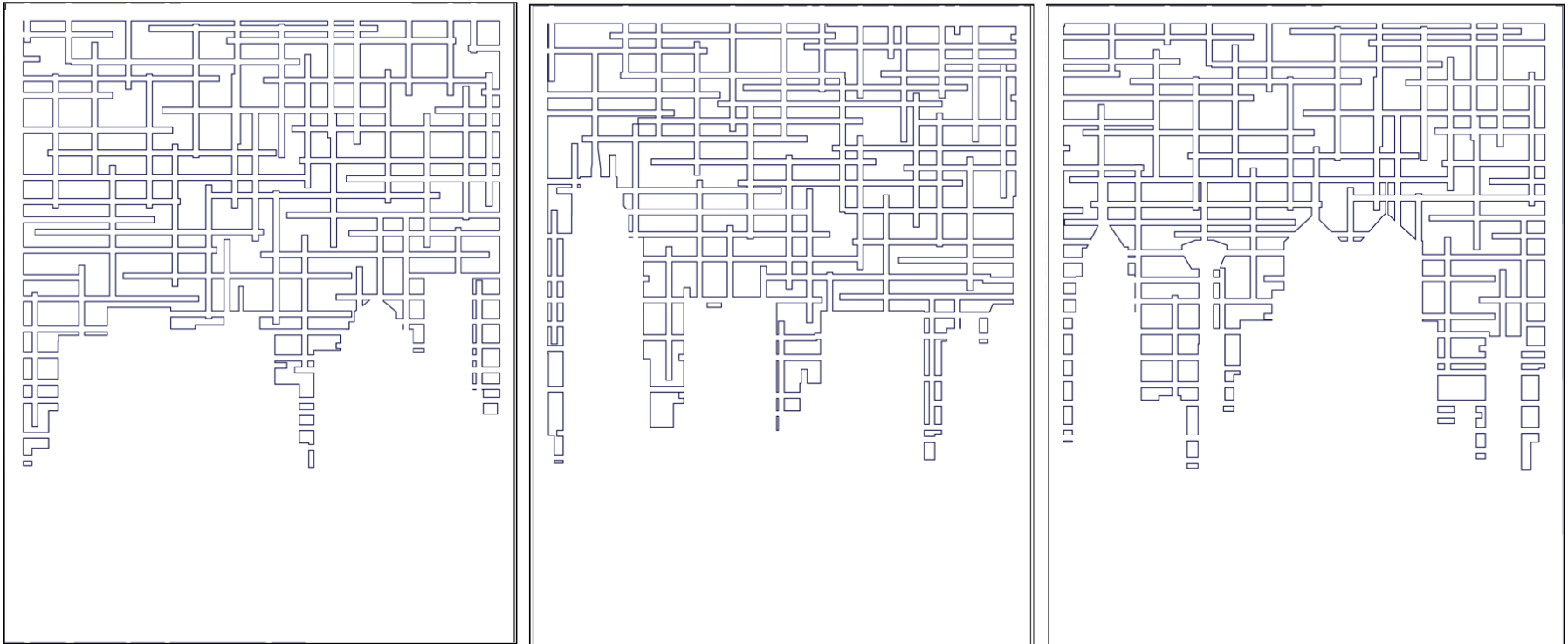
Submission Example: 3-Panel Shelter

PRÍMO SHELTER PANEL

SUBMITTAL FORMAT (8" x 10" each panel)

NAME OF GRAPHIC: _____

Panel # x
of 3 (total)



Each panel in the set requires its own Panel Entry Form, with the artwork shown in Black & White, Name of the Graphic, and each Panel # within the set

This 3-panel submission would be considered one of three maximum allowed submittals

Submission Example: 4-Panel Shelter



If your 4-panel entry is submitted for these shelters:

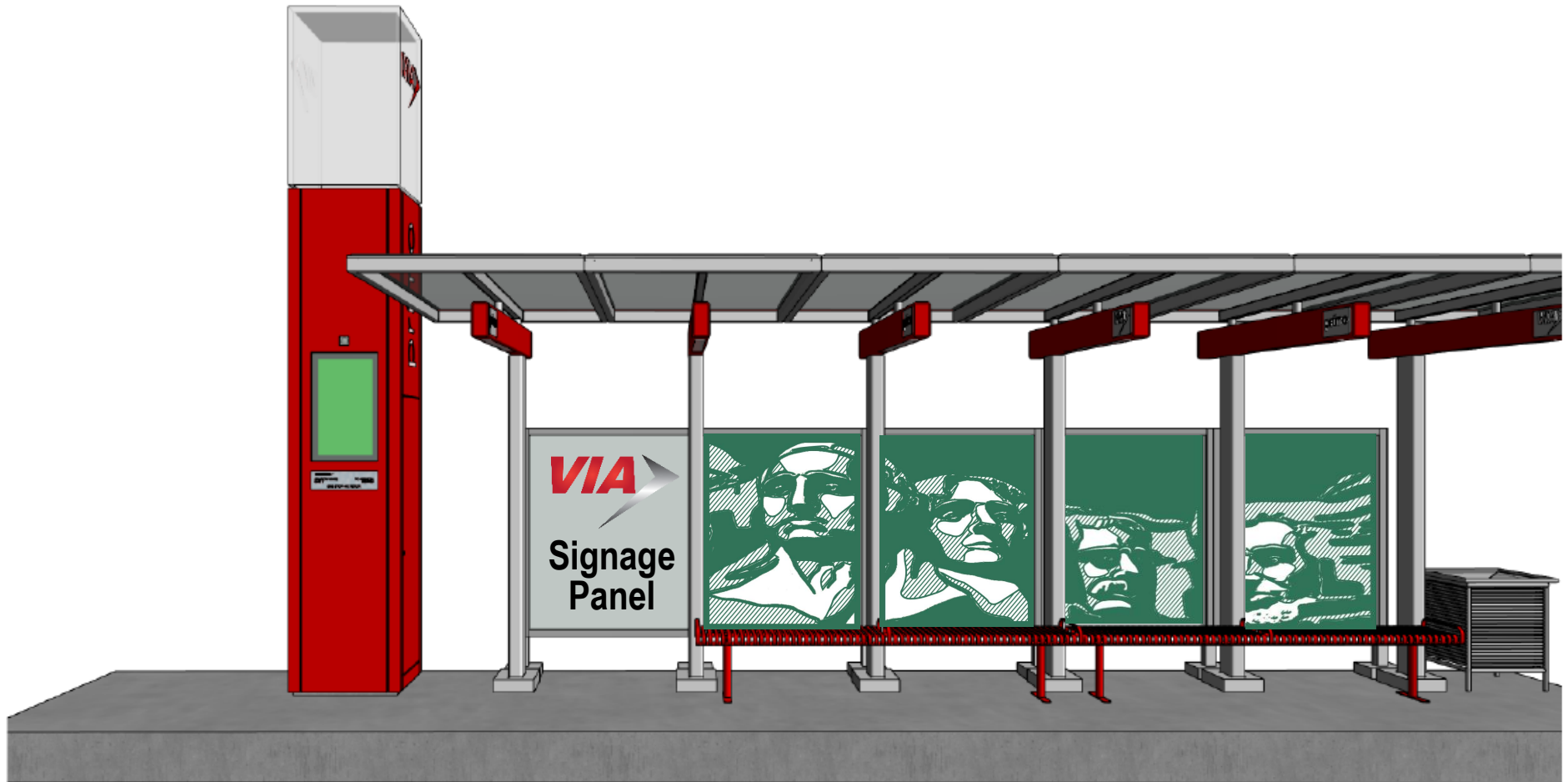
MILITARY DR

**SB/NB Culebra Rd
SB/NB Woodlawn Ave**

ZARZAMORA

**WB/EB Luke Blvd
WB/EB Bynum Ave
WB Whitewood St
WB Barlite Blvd
EB Commercial Ave
EB S Flores St**

Submission Example: 4-Panel Shelter



This is what it would look like installed!

Submission Example: 4-Panel Shelter

PRÍMO SHELTER PANEL

SUBMITTAL FORMAT (8" x 10" each panel)

NAME OF GRAPHIC: _____

Panel # 4
of 4 (total)



Each panel in the set requires its own Panel Entry Form, with the artwork shown in Black & White, Name of the Graphic, and each Panel # within the set

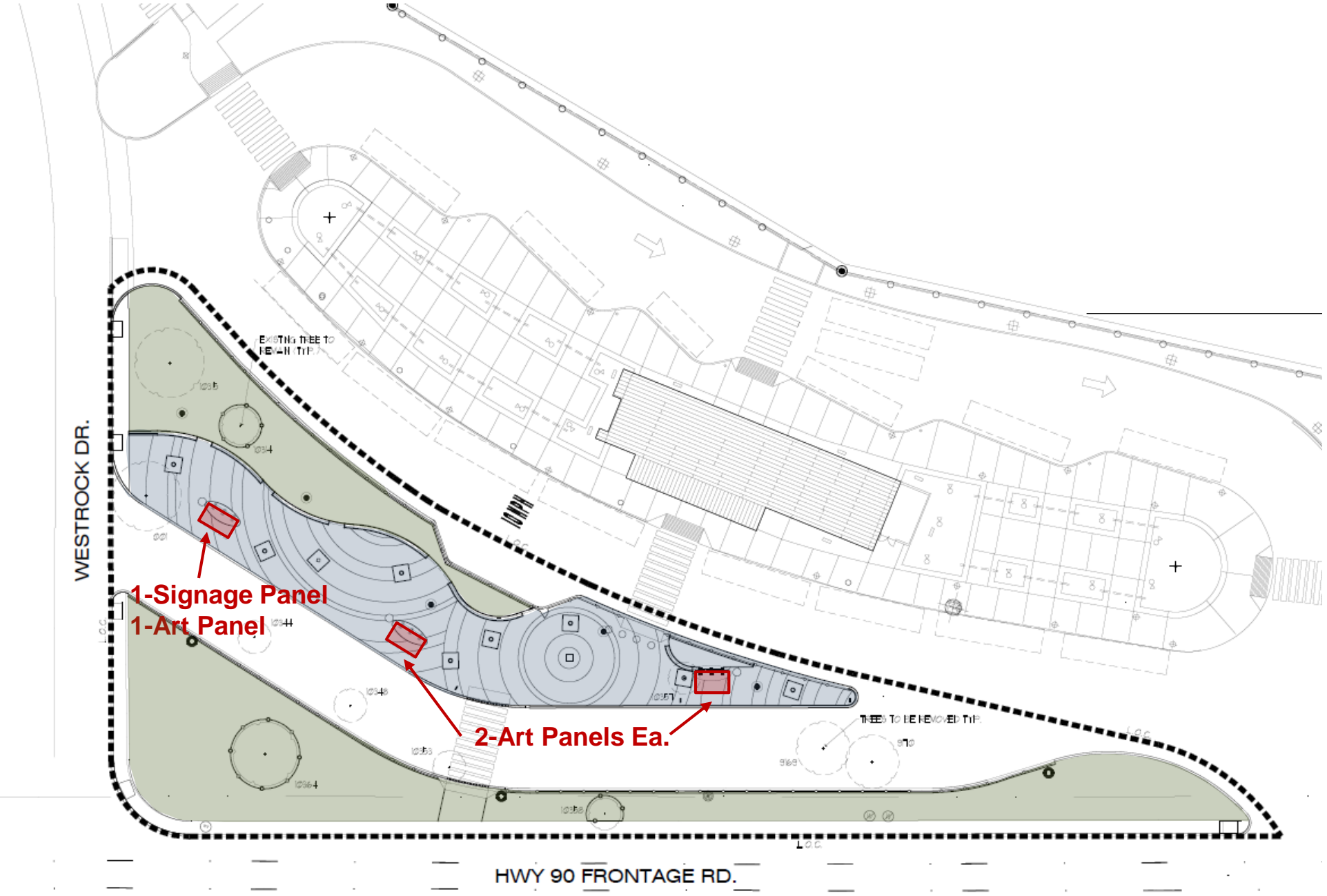
This 4-panel submission would be considered one of three maximum allowed submittals

Submission Example: 5-Panel Station

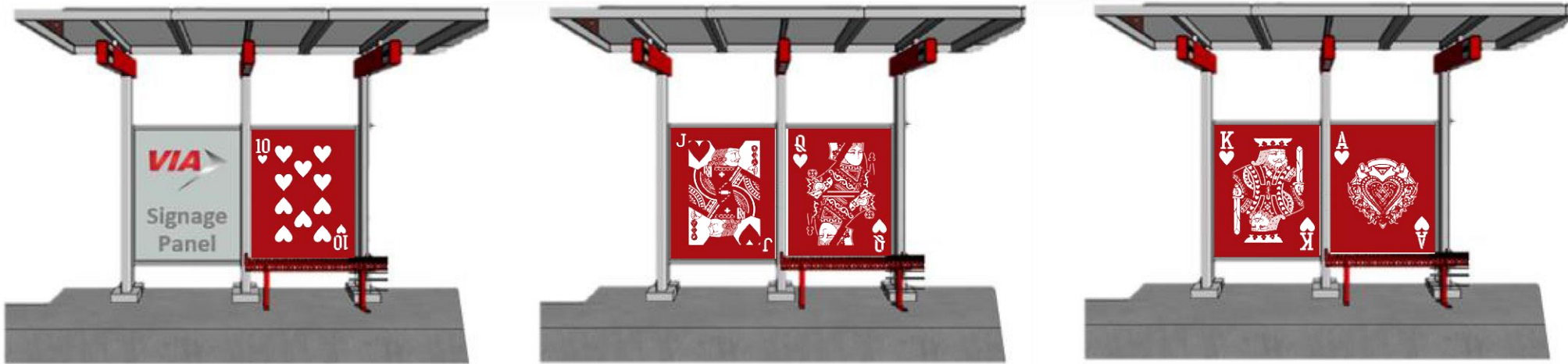


If your 5-panel entry is submitted for the Kel-Lac Transit Center, there are three (3) shelters, with five (5) total art panels

Kel-Lac Context: 5-Panel Station



Submission Example: 5 Panel Station



The 5-panel shelters are not adjacent to each other, so your created design should consider the 'gap' between shelters

Submission Example: 5-Panel Station

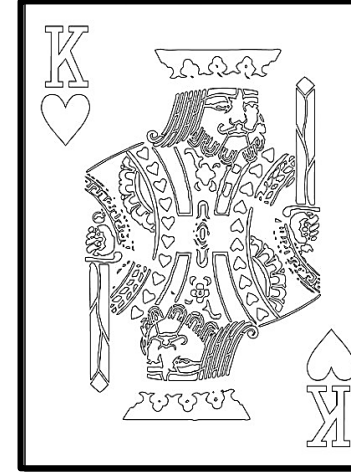
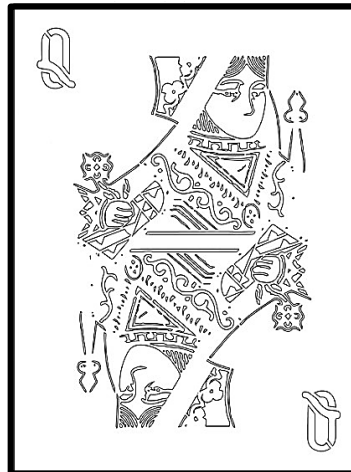
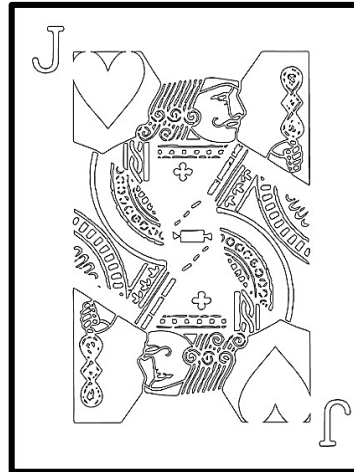
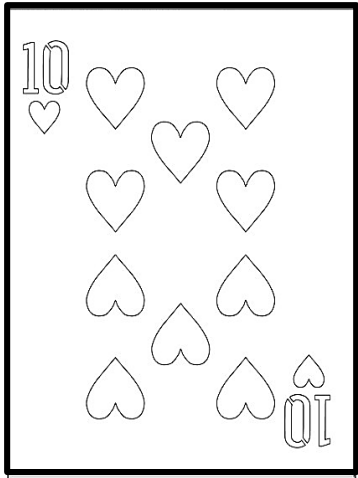
PRÍMO SHELTER PANEL

SUBMITTAL FORMAT (8" x 10" each panel)

NAME OF GRAPHIC: _____

Panel # 'x'

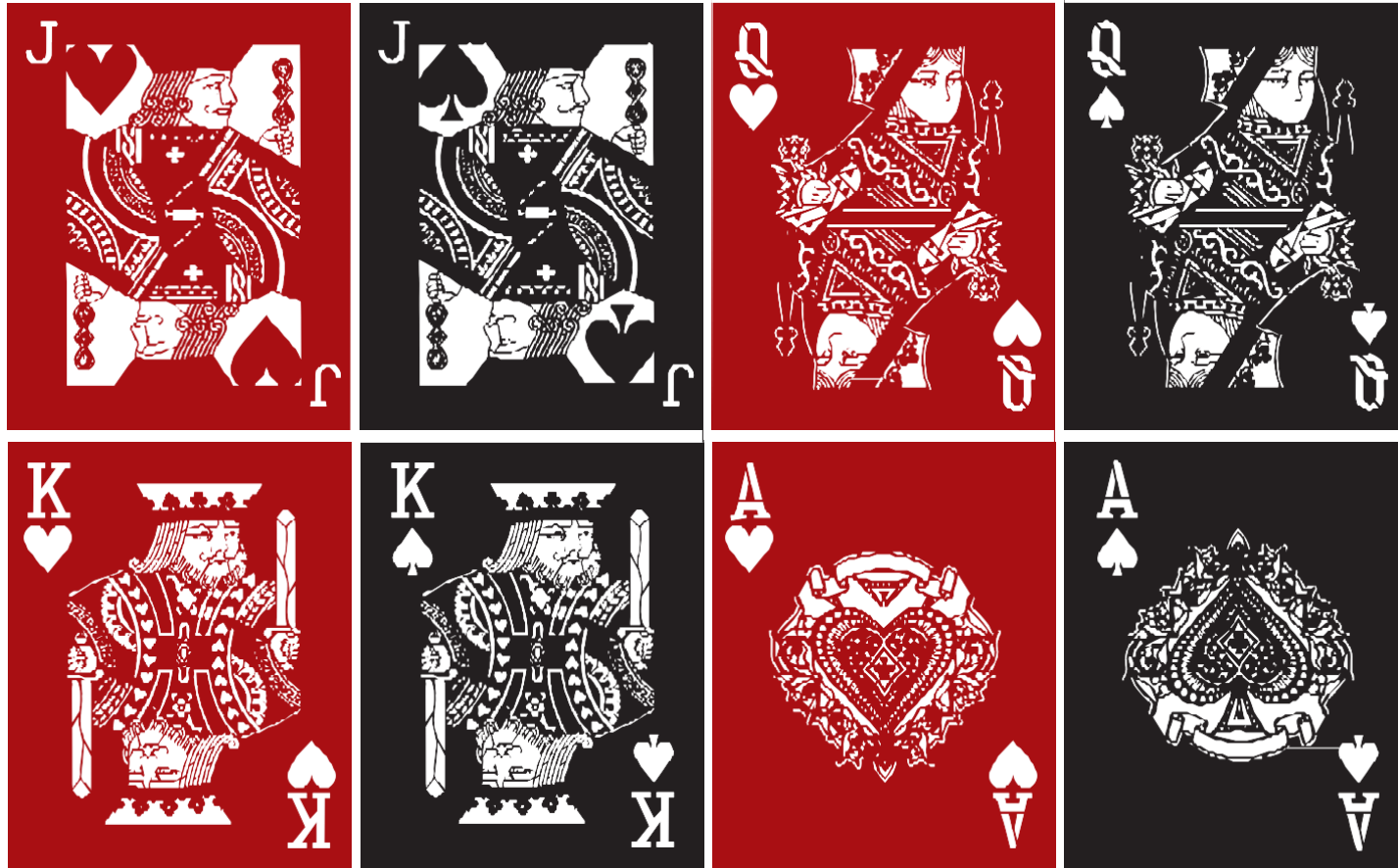
of 5 (total)



Each panel in the set requires its own Panel Entry Form, with the artwork shown in Black & White, Name of the Graphic, and each Panel # within the set

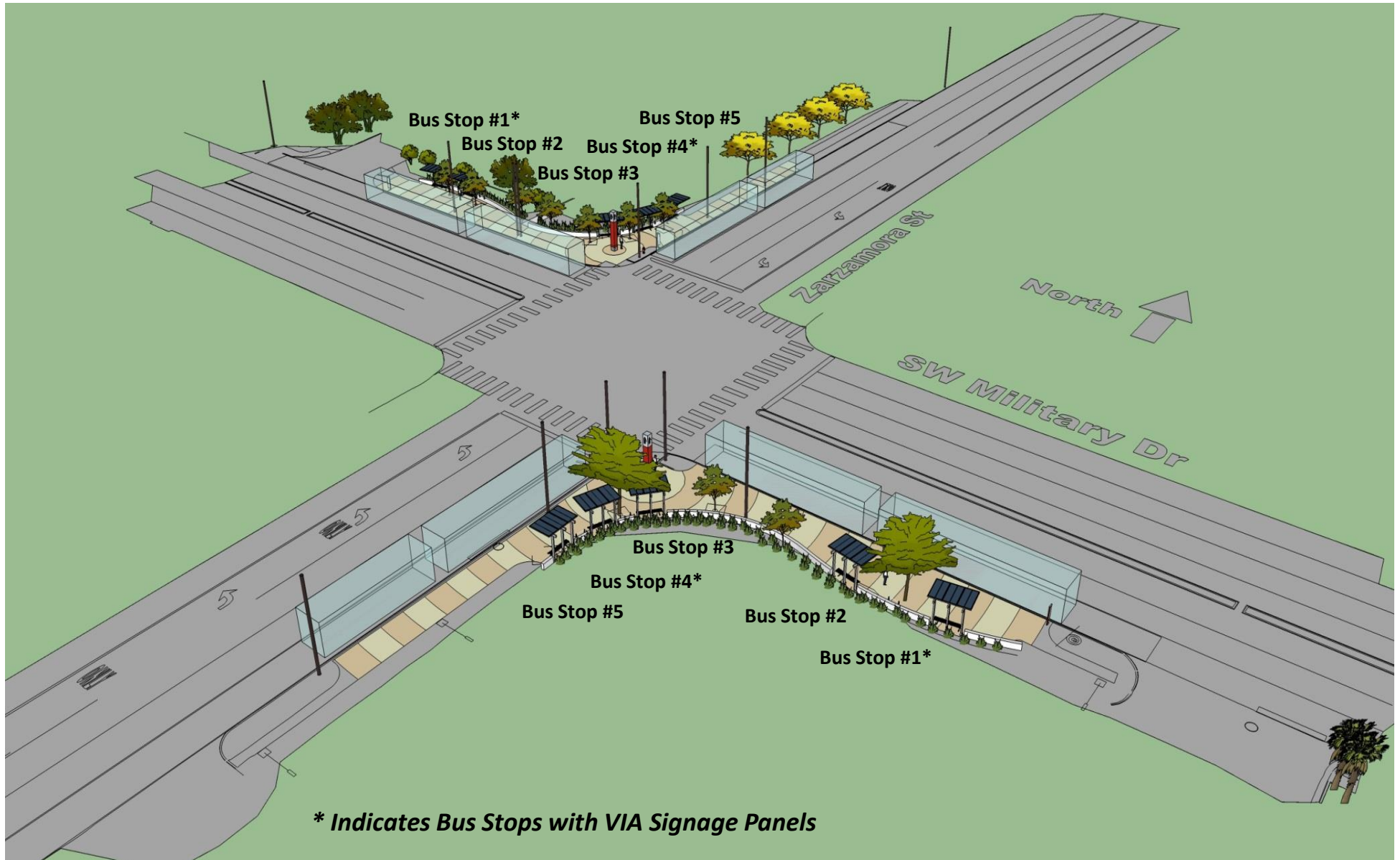
This 5-panel submission would be considered one of three maximum allowed submittals

Submission Example: 8-Panel Station

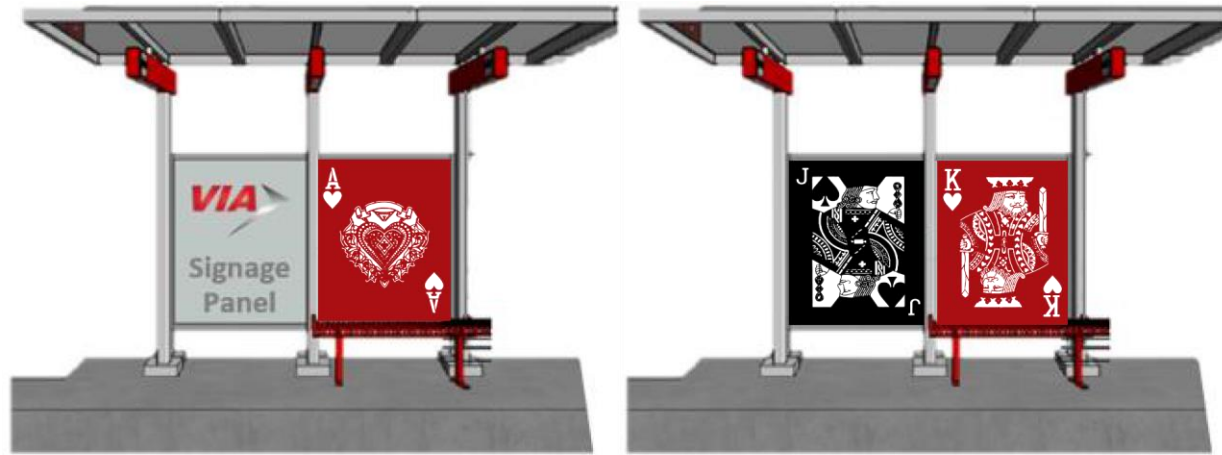


If your 8-panel entry is submitted for one of the two (2) Zarzamora St./Military Dr. intersection quadrant stations, there are five (5) shelters, with eight (8) total art panels

Intersection Context: 8-Panel Station



Submission Example: 8 Panel Station



The 8-panel shelters are not adjacent to each other, so your created design should consider the 'gap' between shelters

Submission Example: 8 Panel Station

PRÍMO SHELTER PANEL

SUBMITTAL FORMAT (8" x 10" each panel)

NAME OF GRAPHIC: _____ **Panel #** 'x'
of 8 (total)



Each panel in the set requires its own Panel Entry Form, with the artwork shown in Black & White, Name of the Graphic, and each Panel # within the set

This 8-panel submission would be considered one of three maximum allowed submittals

Example: Person/Figure



Turning a person's image into a two tone figure easily translates to the cut-metal process

Example: Building/Landmark



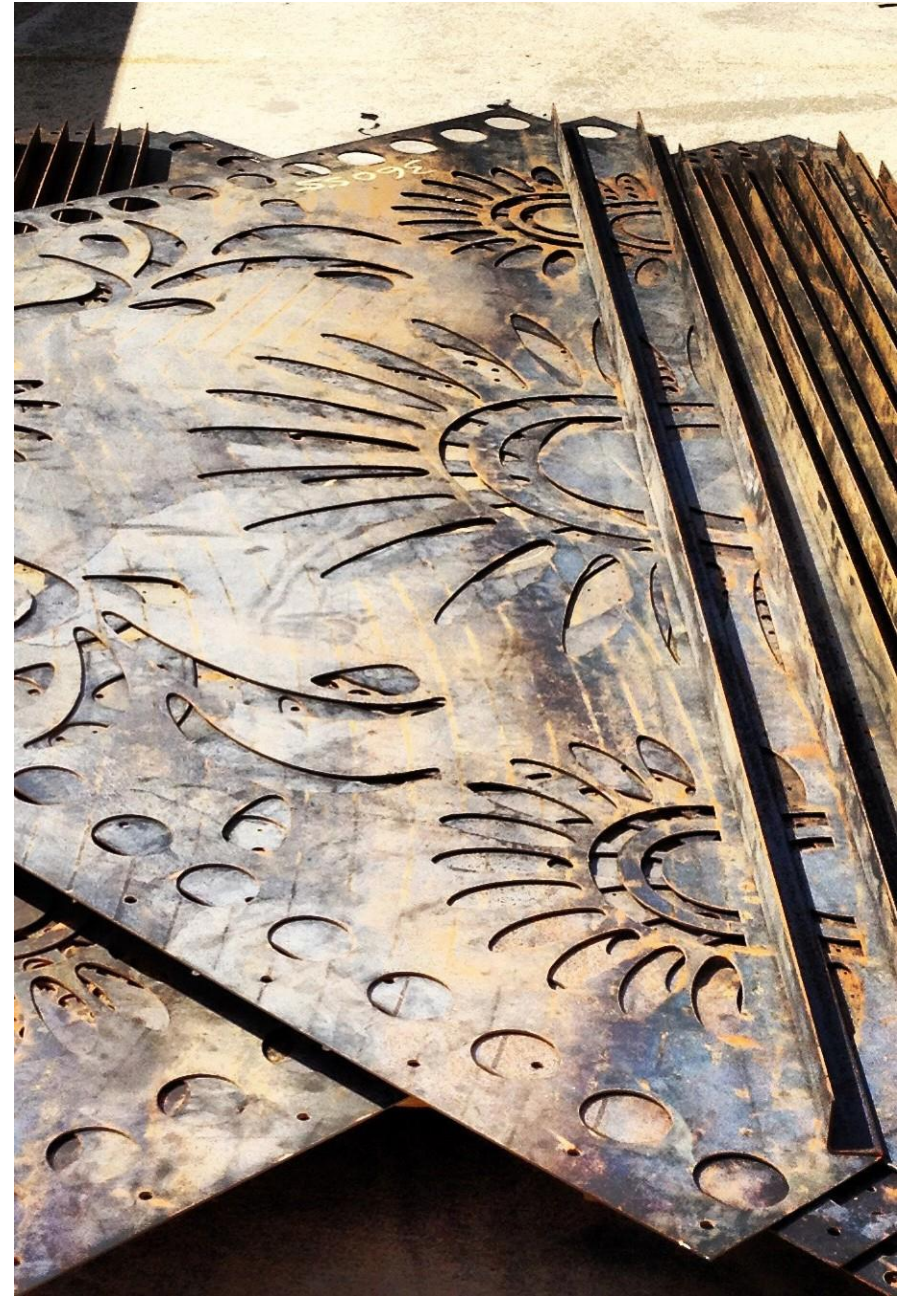
*Installation application
shown for reference only*

Example: Text

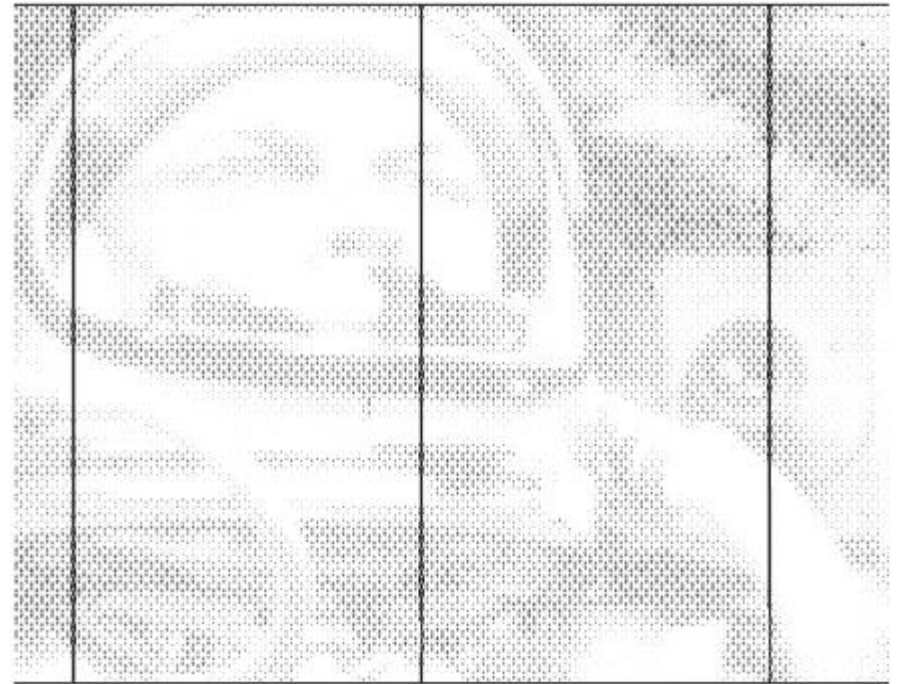


*Installation application
shown for reference only*

Example: Patterns/Motif



Example: Halftone



CONTEST QUESTIONS:

artintransit@viainfo.net

210.299.5907 or 5904

SUBMITTAL INFORMATION:

www.viainfo.net/art-in-transit